


Get your Laptop NOW at low costs!

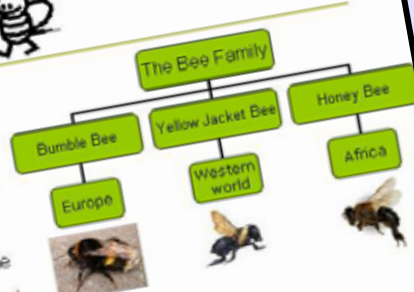
Calling upon all teachers and learners



Microsoft PowerPoint

The Bee

- Bees are flying insects closely related to wasps and ants.
- Bees are a monophyletic lineage within the superfamily Apoidea, presently classified by the unranked taxon name Anthophila.
- There are nearly 20,000 known species of bee, in nine recognized families, though many are undescribed and the actual number is probably higher.
- They are found on every continent except Antarctica, in every habitat on the planet that contains insect-pollinated flowering plants.



YOUR BEST INVESTMENT

Microsoft Word

Lesson Planer
 Maths Grade 6
 Mrs Van der Merwe

1st January 2008 - 5th January 2008

- Monday 1 January
 - Go through previous homework exercise 4 page 167
 - Do Maths Quiz
 - Give learners homework-exercise 5 page 167
- Tuesday 2 January
 - Go through previous homework exercise 5 page 167
 - Collect Mathematician project
 - Teach module 3 on page 170
 - Give learners homework-exercise 1 page 172
- Wednesday 3 January
 - Go through previous homework exercise 1 page 172
 - Build atom molecule in class
 - Learners must read through page 173-175
- Thursday 4 January
 - Do class exercise on page 176 in groups of 4
 - Mark in class together
 - Give learners homework exercise 2 page 175
- Friday 5 January
 - Go through previous homework exercise 2 page 175
 - Teach module 4 on page 178
 - Give learners homework-exercise 1 page 178

Do not train children to learning by force and harshness, but direct them to it by what amuses their minds, so that you may be better able to discover with accuracy the peculiar bent of the genius of each.

Bees and Wasps

Differences between Bees and Wasps		
	BEE	WASP
Stinger	large barbs	small barbs
Body	rounder body, usually appears hairy	rounder body, usually appears hairy
Legs	hairy	few hairs
Food	feed on pollen and nectar	parasites or other insects



Fundraiser 2008						
Date	Event	Amount Raised	Amount spent	Profit	Total Number of learners	Learners present
06 July 2008	Golf day	R 6,000			250	135
02 August 2008	Big walk	R 5,467	R 470	R 5,530	250	214
14 October 2008	Family breakfast	R 3,000	R 800	R 4,946	250	180
Total				R 2,200	750	529
						% of learners present
						54%
						86%
						72%
						71%



Fundraiser 2008						
Date	Event	Amount Raised	Amount spent	Profit	Total Number of learners	Learners present
39635	Golf day	6000	470	=C3-D3	250	135
39662	Big walk	5467	521	=C4-D4	250	214
39735	Family breakfast	3000	800	=C5-D5	250	180
Total				=SUM(F3:F5)		=SUM(G3:G5)
						=G6/F6

Microsoft Excel